

• *Binkley* •

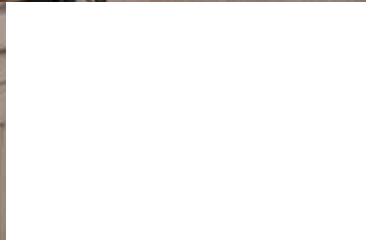


MANORWOOD
HOMES

DESIGN • ENHANCE • BEAUTIFY

Table of Contents

2MC3601-X	Binkley 1	3252	1596	Pg. 4
2M3602- X	Binkley 3	3264	1752	Pg. 5
2M3601- X	Binkley 2	3254	1674	Pg. 6
	Binkley 2 Photos			Pg. 7
3M3601-R	Binkley 4	4156	1852	Pg. 8
6M3601-R	Binkley 5	2848/34	2206	Pg. 9
2M3604-R	Binkley 6	3663/4	1864	Pg. 10
2M3603-X	Binkley 7	3268	2097	Pg. 11





French Country Oak
Mission Flat Panel



Barnwood Oak
Mission Flat Panel



Warm Sienna
Mission Flat Panel



Hickory
Raised Panel



Shadow Grey
Mission Flat Panel



White
Mission Flat Panel



Precision Cut and Dadoed Construction Fastened and Hot Glued - Ensures a Long Lasting and Square Cabinet Box

3/4 Overlaid Cabinet Doors & Drawer - Limited Exposure of Cabinet Stiles

3/4" Thick Shelving with Finished Edges - Prevents Warping of Shelves

Base and Wall Cabinet Adjustable Shelving - Fit Your Lifestyle

3/4" Face Frames - Durable and Securely Holds Fasteners for Long Lasting Use

Pocket Screws - Ensure a Strong and Square Frame

Dove-Tail Constructed Drawers - Superior Drawer Strength

Undermount Soft Close Drawer Guides

Concealed and Recessed Hinges - Superior Door Strength

Recessed Toe Kick - Work at Counters with Ease

No Exposed Hanging Cleats- More Storage and Cleaner Look

KCMA Testing



- Overhead Cabinets Rated to 500 pound Capacity
 - Drawers Opened 28,000 Times with Weight
 - Cabinet Doors Opened 25,000 Times
 - Extreme Testing of Cabinet Finish
- Evermore Custom Cabinets endure a series of rigorous tests, measuring structural integrity. Cabinet doors, drawers and even the finish are tested before earning the KCMA Cabinet Certification.

Visit www.KCMA.org
for more information



Binkley 1

2MC3601-X 3252

Style: Cape

Square Feet: 1596 - 1st Floor

830 - 2nd Floor

Bedrooms: 5

Bathrooms: 3

Optional Features:

- 6' Cape Dormer
- 27'4" Twin Peak Dormer
- 12" Dormer
- Window in Gable End
- Shake Siding Accent
- Window Lineals
- Prairie Window Grids
- Corbels
- Upgraded Front Door
- Sidelite
- Dutch Eaves

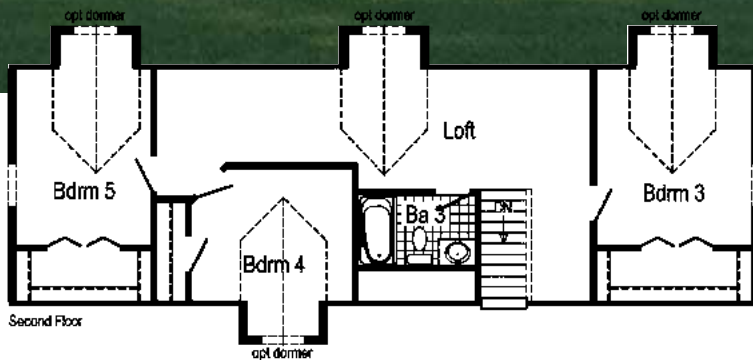
Features On-Site by Others:

- Garage
- Gutters and Downspouts

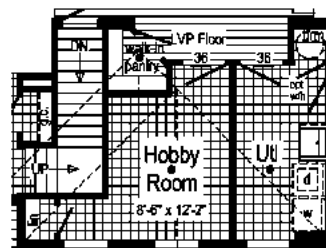
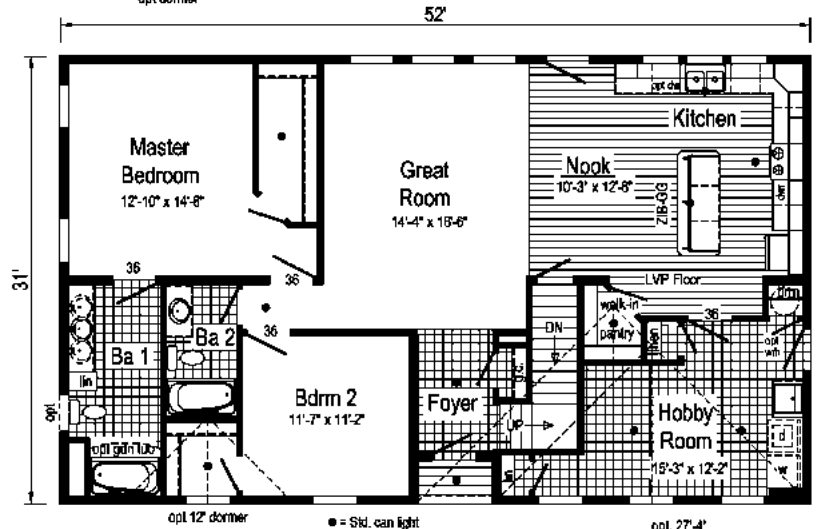
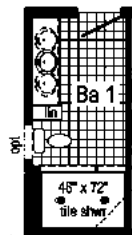
Proposed Second Floor:

All design materials and work to be the responsibility of the builders on site to local codes. Light, vent, egress, heating and plumbing are the responsibility of the builder

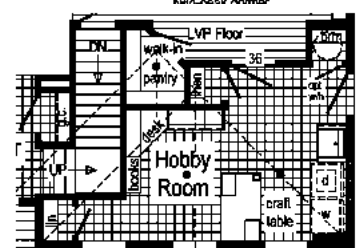
WWW.MANORWOODHOMES.COM



Optional 4'x6' Walk-In Tile Shower



Optional Separate Hobby Room



Optional Hobby Room Desk, Craft Table & Cabinetry



Binkley 3

2M3602-X 3264

Style: Ranch or Cape
 Square Feet: 1752
 Bedrooms: 3
 Bathrooms: 2

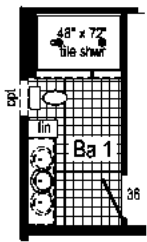
Optional Features:

- 27" Twin Peak Dormer
- Vertical Siding
- Shake Siding Accent
- Window Grids
- Window Lineals
- Corbels
- Dutch Eaves
- Upgraded Front Door

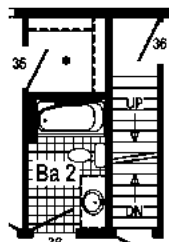
Features On-Site by Others:

- Garage

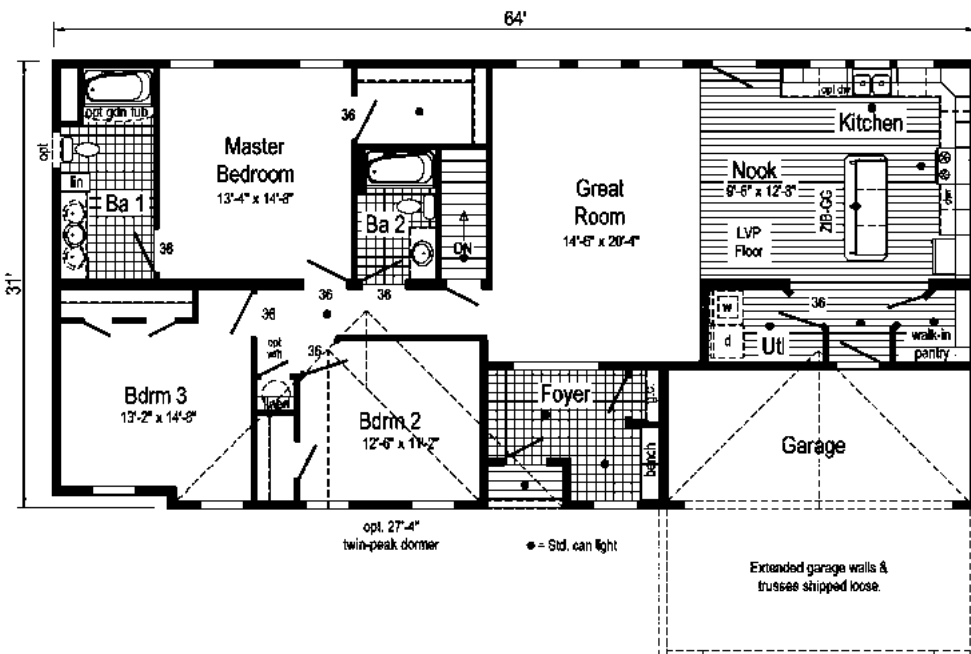
MANORWOOD HOMES



**Optional
4'x6' Walk-In
Tile Shower**



**Optional
Attic Stairs**





Binkley 2

2M3601-X 3254

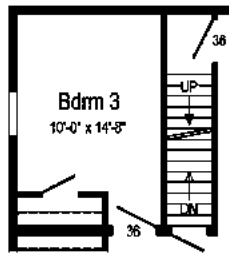
Style: Ranch or Cape
 Square Feet: 1674
 Bedrooms: 3
 Bathrooms: 2

Optional Features:

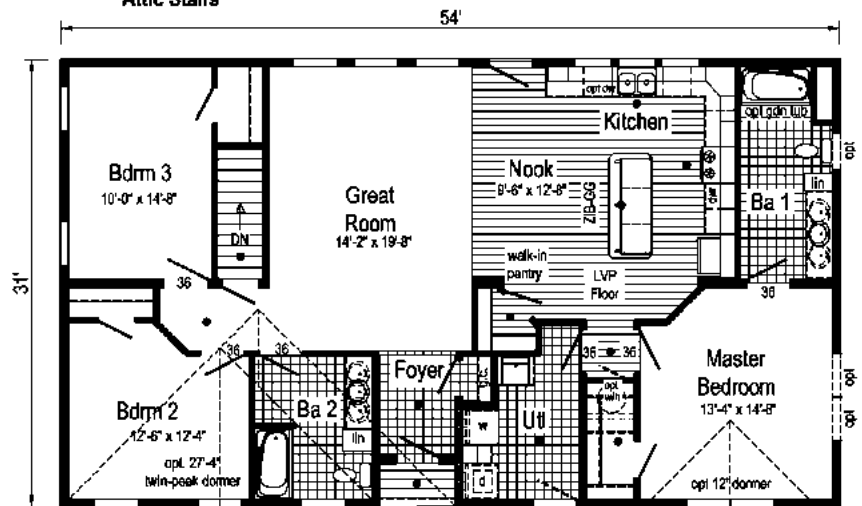
- 27'4" Twin Peak Dormer
- 9/12 Roof
- 6' Cape Dormer
- Shake Siding Accent
- Upgraded Front Door
- Sidelite

Features On-Site by Others:

- Garage
- Gutters and Downspouts

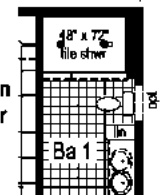


Optional Attic Stairs



Opt. Open Stairwell

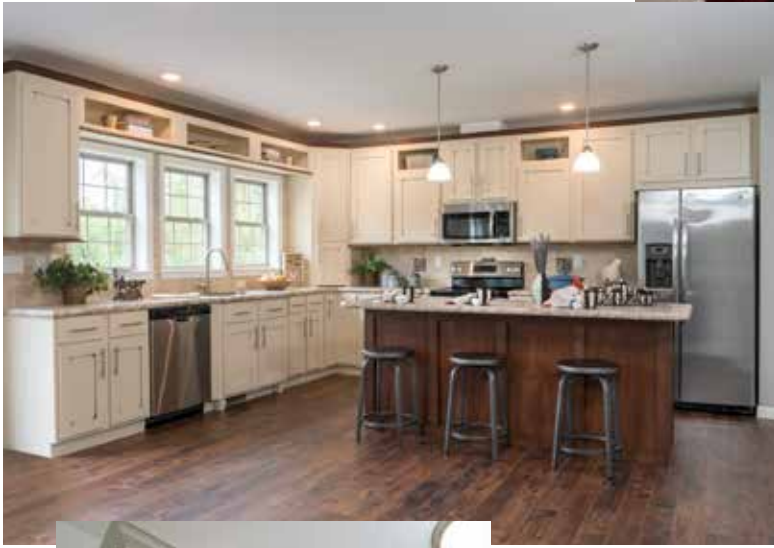
Only available with 8'12" or 12'12" roof



Optional 4'x6' Walk-In Tile Shower

Binkley 2

Scan to Watch Video!



Binkley 2 Photos

*National Award
Winning Plan*



*2017 Best New
House Design*

MANORWOOD
HOMES



Binkley 4

3M3601-R 4156

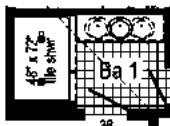
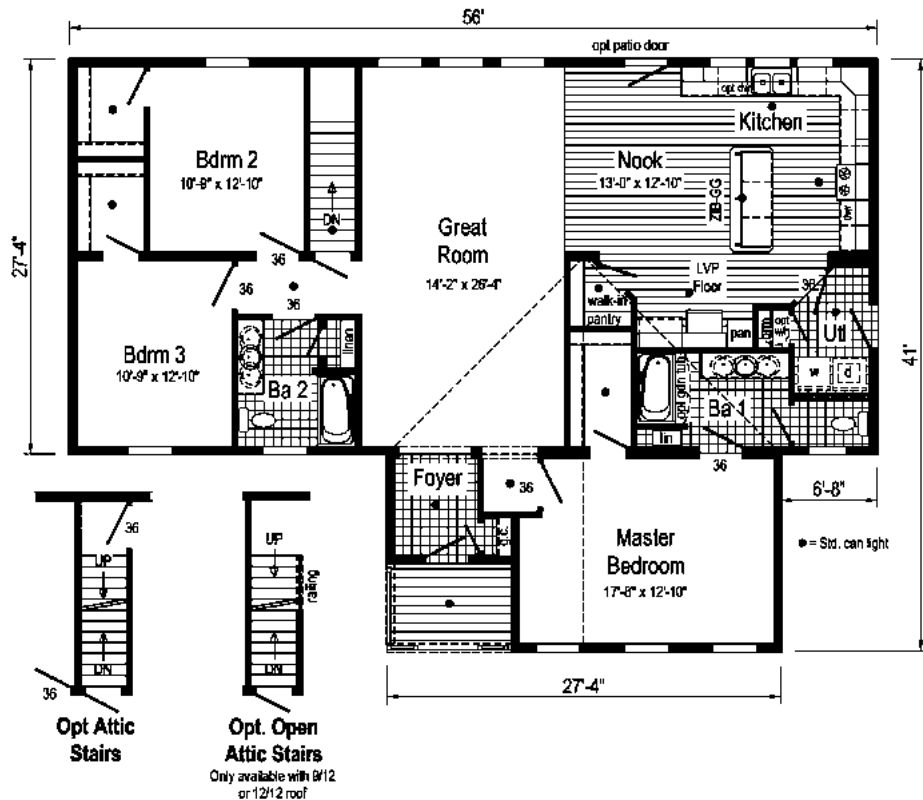
Style: Ranch or Cape
 Square Feet: 1852
 Bedrooms: 3
 Bathrooms: 2

Optional Features:

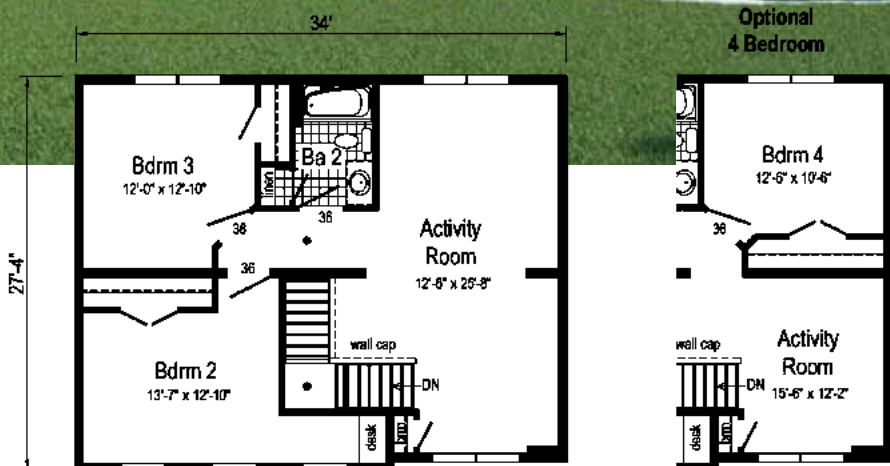
- Vertical Siding
- Shake Siding Accent
- Dormer Window
- Prairie Window Grids
- Window Lineals
- Upgraded Front Door

Features On-Site by Others:

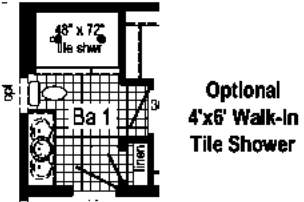
- Garage
- Gutters and Downspouts



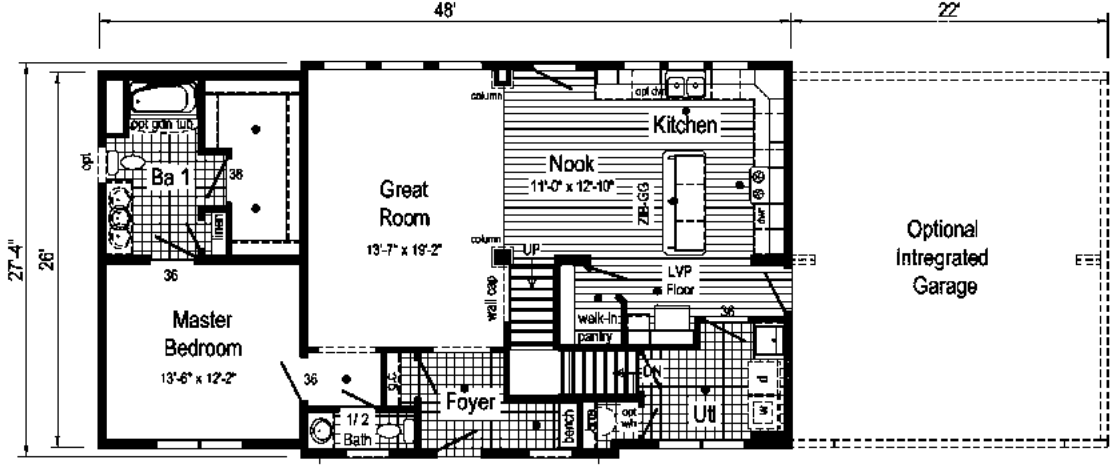
Optional
 4'x6' Walk-In
 Tile Shower



SECOND FLOOR



Optional 4'x6' Walk-in Tile Shower



MAIN FLOOR

Binkley 5

6M3601-R
2848/34

Style: 2-Story
Square Feet: 2206
Bedrooms: 4
Bathrooms: 2.5

- Optional Features:**
- Flush Dormer
 - Window Lineals
 - Window Grids
 - Clay Trim Package
 - Shake Siding Accent
 - Upgraded Front Door
 - Sidelite
 - 2 Porch Lights

- Features On-Site by Others:**
- Garage
 - Covered Porch
 - Gutters and Downspouts

MANORWOOD HOMES



Binkley 6

2M3604-R 3663/4

Style: Ranch or Cape
 Square Feet: 1864 - 1st Floor
 980 - 2nd Floor

Bedrooms: 3
 Bathrooms: 2

Optional Features:

- 12/12 Roof Pitch
- 6' Cape Dormer
- Chalet Trapezoid Windows
- Shake Siding Accent
- Window Lineals
- Clay Trim Package
- Upgraded Front Door
- Window Grids

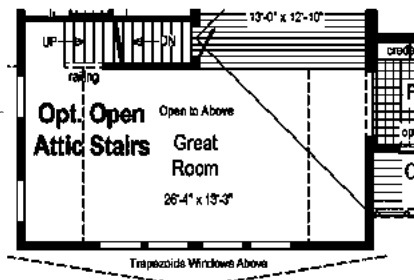
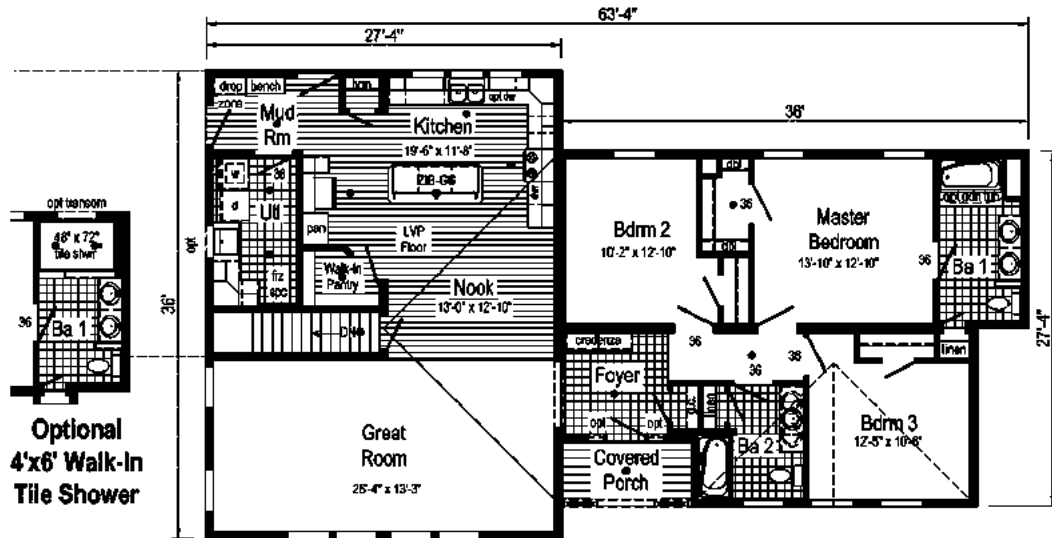
Features On-Site by Others:

- Garage
- Gutters and Downspouts

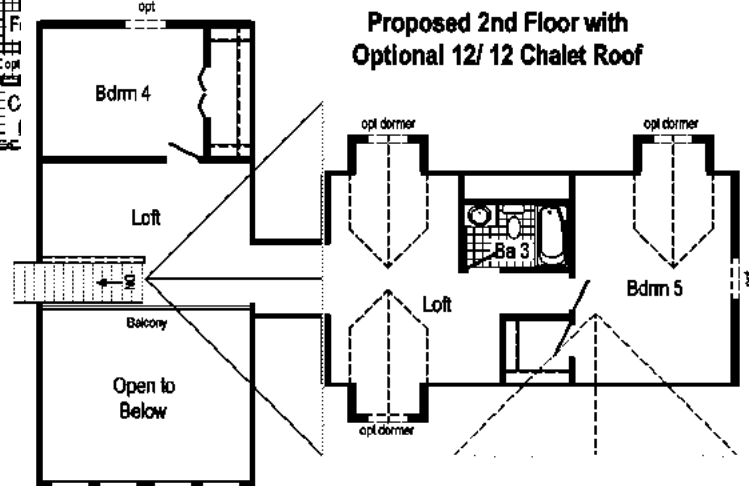
Proposed Second Floor:

All design materials and work to be the responsibility of the builders on site to local codes. Light, vent, egress, heating and plumbing are the responsibility of the builder

WWW.MANORWOODHOMES.COM



Optional 12/12 Chalet Roof with Trapezoid Windows & Prow Eave



Proposed 2nd Floor with Optional 12/12 Chalet Roof



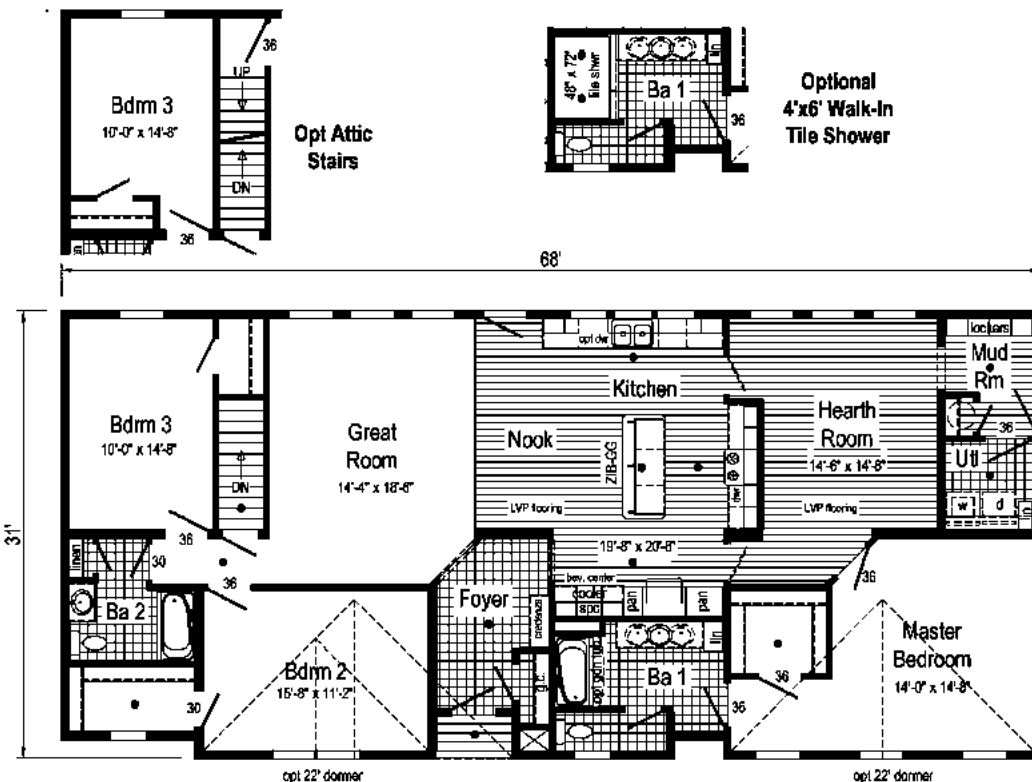
Binkley 7

2M3603-X 3268

Style: Ranch
 Square Feet: 2097
 Bedrooms: 3
 Bathrooms: 2

- Optional Features:**
- 6' Cape Dormers
 - 22' Dormers with Shake Accent
 - Upgrade Front Door and Lineals

- Features On-Site by Others:**
- Garage
 - Gutters and Downspouts





MANORWOOD HOMES

DESIGN • ENHANCE • BEAUTIFY

• *Binkley* •



State Route 38
Emlenton, PA 16373
724-867-0189



All information and images contained in this brochure are property of The Commodore Corporation and for the use by active dealers of the company only. © Note: Because of varying state requirements and optional equipment, some or all of the utility locations may change per floor plan. (i.e. furnace, stairwell, etc.) Consult your factory representative for exact specifications. Your purchase contract is with your builder/dealer who is an independent contractor, not our agent, and is responsible totally for any alterations, exchanges, additions or attachments made in or to your home. Customized floorplans are available. Equipment, colors, material, specifications, prices and model availability are subject to change without notice. Some exterior attachments as shown on elevations are materials required to be supplied locally or installed by others on-site. AP117721 2.5M 10/19